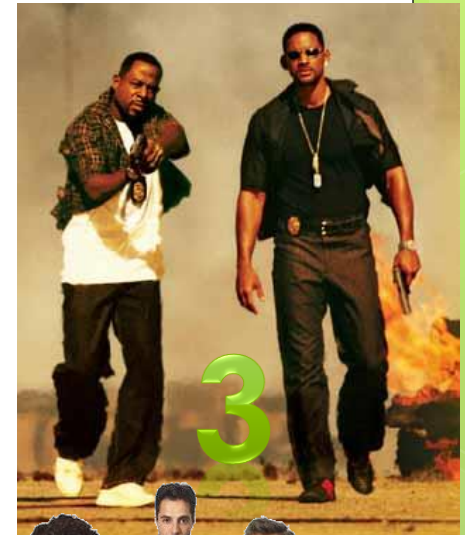


BELLRINGER, Apr. 18

Identify the Camera ANGLES



BELLRINGER, Apr. 18

ANSWERS



BELLRINGER: Apr. 24

Think of a movie you've seen recently (or a favorite you remember) . . .

- a. Describe the first scene with the main character*
- b. What technique of character introduction was used?*



BELLRINGER: Apr. 25

Describe the color palette in these two movie frames. What effect does each create?



Scent of a Woman

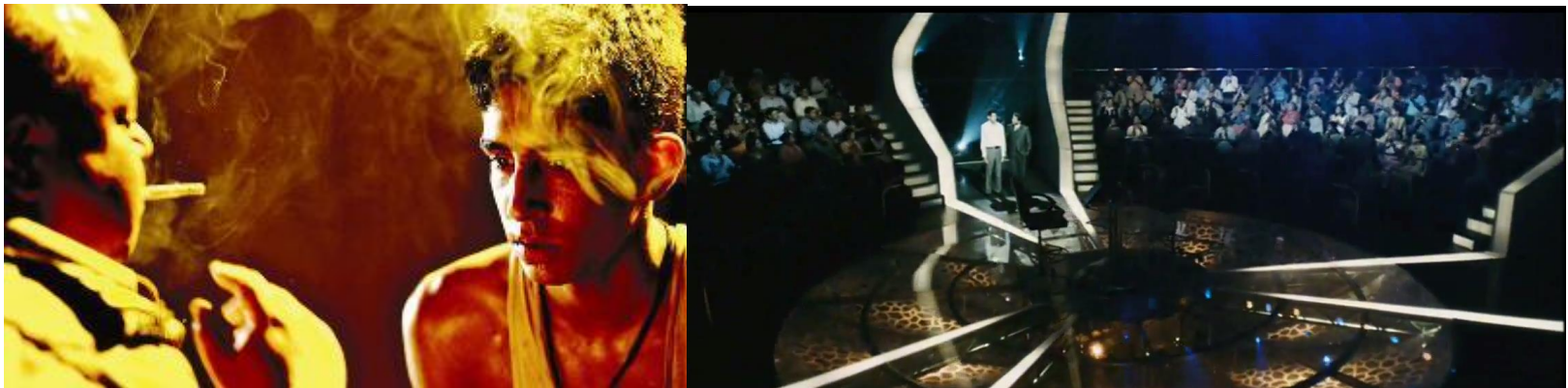


Slumdog Millionaire

Use your LIGHTING notes.

BELLRINGER: Apr. 26

Describe how we are introduced to Jamal Malik (the slumdog) in the opening scenes of the movie. What technique is used? What effect does it create?

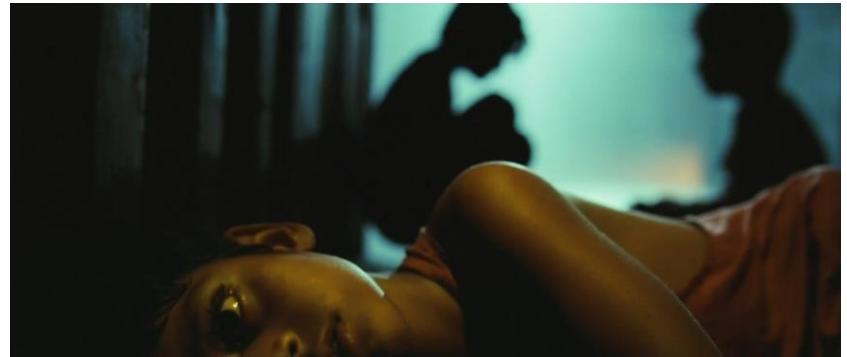


Use your notes.

BELLRINGER: Apr. 27

*Describe the following
for this frame:*

- *LIGHTING*
- *SHOT*
- *ANGLE*
- *WHAT WE LEARN
ABOUT THE
CHARACTER IN
THIS SCENE*



Use your notes.

BELLRINGER: Apr. 28

Describe the following for ONE of these two frames:

- *LIGHTING*
- *SHOT*
- *ANGLE*
- *WHAT WE LEARN ABOUT THE CHARACTER IN THIS SCENE*



Use your notes.